

**Phospho-mouse CCNB3(S1063) Antibody**  
**Affinity Purified Rabbit Polyclonal Antibody (Pab)**  
**Catalog # AP3872a**

**Specification**

---

**Phospho-mouse CCNB3(S1063) Antibody - Product Information**

Application	DB,E
Primary Accession	<a href="#">Q810T2</a>
Reactivity	Mouse
Host	Rabbit
Clonality	Polyclonal
Isotype	Rabbit IgG
Calculated MW	158969

**Phospho-mouse CCNB3(S1063) Antibody - Additional Information**

**Other Names**

G2/mitotic-specific cyclin-B3, Ccnb3, Cycb3

**Target/Specificity**

This mouse CCNB3 Antibody is generated from rabbits immunized with a KLH conjugated synthetic phosphopeptide corresponding to amino acid residues surrounding S1063 of mouse CCNB3.

**Dilution**

DB~~1:500

E~~Use at an assay dependent concentration.

**Format**

Purified polyclonal antibody supplied in PBS with 0.09% (W/V) sodium azide. This antibody is purified through a protein A column, followed by peptide affinity purification.

**Storage**

Maintain refrigerated at 2-8°C for up to 2 weeks. For long term storage store at -20°C in small aliquots to prevent freeze-thaw cycles.

**Precautions**

Phospho-mouse CCNB3(S1063) Antibody is for research use only and not for use in diagnostic or therapeutic procedures.

**Phospho-mouse CCNB3(S1063) Antibody - Protein Information**

**Name** Ccnb3

**Synonyms** Cycb3

**Function** Cyclins are positive regulatory subunits of the cyclin- dependent kinases (CDKs), and thereby play an essential role in the control of the cell cycle, notably via their destruction during cell division. Its tissue specificity suggest that it may be required during early meiotic prophase I

(By similarity).

**Cellular Location**

Nucleus.

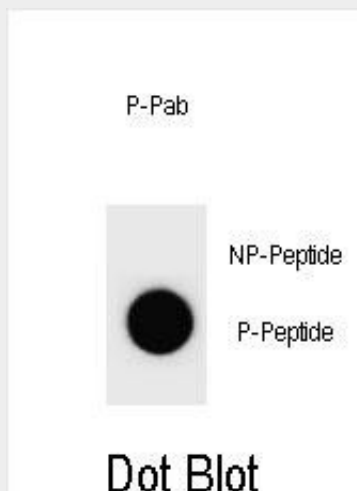
**Tissue Location**

Expressed in testis. Also expressed in the fetal ovary, but not in the adult.

**Phospho-mouse CCNB3(S1063) Antibody - Protocols**

Provided below are standard protocols that you may find useful for product applications.

- [Western Blot](#)
- [Blocking Peptides](#)
- [Dot Blot](#)
- [Immunohistochemistry](#)
- [Immunofluorescence](#)
- [Immunoprecipitation](#)
- [Flow Cytometry](#)
- [Cell Culture](#)

**Phospho-mouse CCNB3(S1063) Antibody - Images**

Dot blot analysis of Mouse CCNB3 Antibody (Phospho S1063) Phospho-specific Pab (Cat. #AP3872a) on nitrocellulose membrane. 50ng of Phospho-peptide or Non Phospho-peptide per dot were adsorbed. Antibody working concentrations are 0.6ug per ml.

**Phospho-mouse CCNB3(S1063) Antibody - Background**

Cyclins are positive regulatory subunits of the cyclin-dependent kinases (CDKs), and thereby play an essential role in the control of the cell cycle, notably via their destruction during cell division. Its tissue specificity suggest that it may be required during early meiotic prophase I (By similarity).